

The Goolwa Historic Pub-crawl



Australasian Hotel on left, Corio Hotel on centre, old railway reserve in foreground, c 1921 [SLSA PRG-1258-2-427.]

1 Australasian Hotel

Licensed in January 1858, the Australasian was converted into a private residence in 1983.

The Australasian Hotel, c.1920 [SLSA PRG-1258-2-415]



2 Corio Hotel

The Corio was licensed in 1858 and extended and the long balcony added in the 1920s. From 1912 until the 1920s it shared the building with J W Armfield's saddlery.

The Corio Hotel, c.1920



3 Goolwa Hotel

The Goolwa Hotel was the first pub built and licensed in Goolwa in December 1853, coinciding with the opening of the railway to Port Elliot. It is famous for the figurehead from the "Mozambique", wrecked along the Coorong in August 1854; salvaged timber and fittings were reputedly used in building the second storey and stairway in 1856.

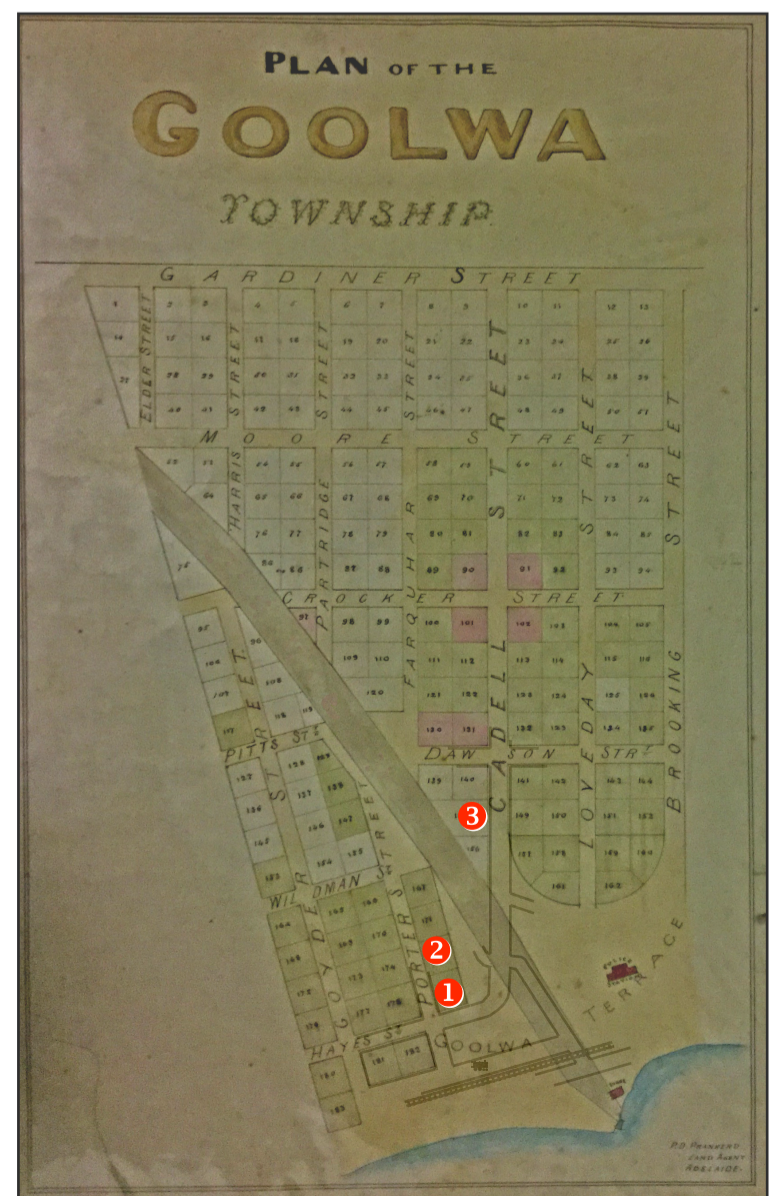
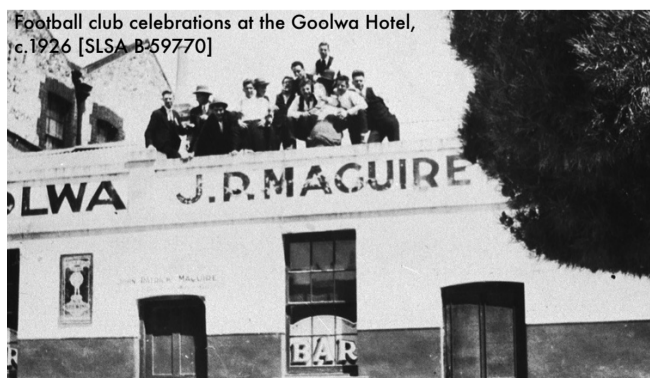
The Goolwa Hotel, c.1870 [SLSA B-35214]



The Goolwa Hotel, c.1950 [B-30086] with figurehead at right



Football club celebrations at the Goolwa Hotel, c.1926 [SLSA B-59770]



P.D. Panker's Plan of Goolwa Township, c 1865 [SLSA PRG-1258-2-427.]